



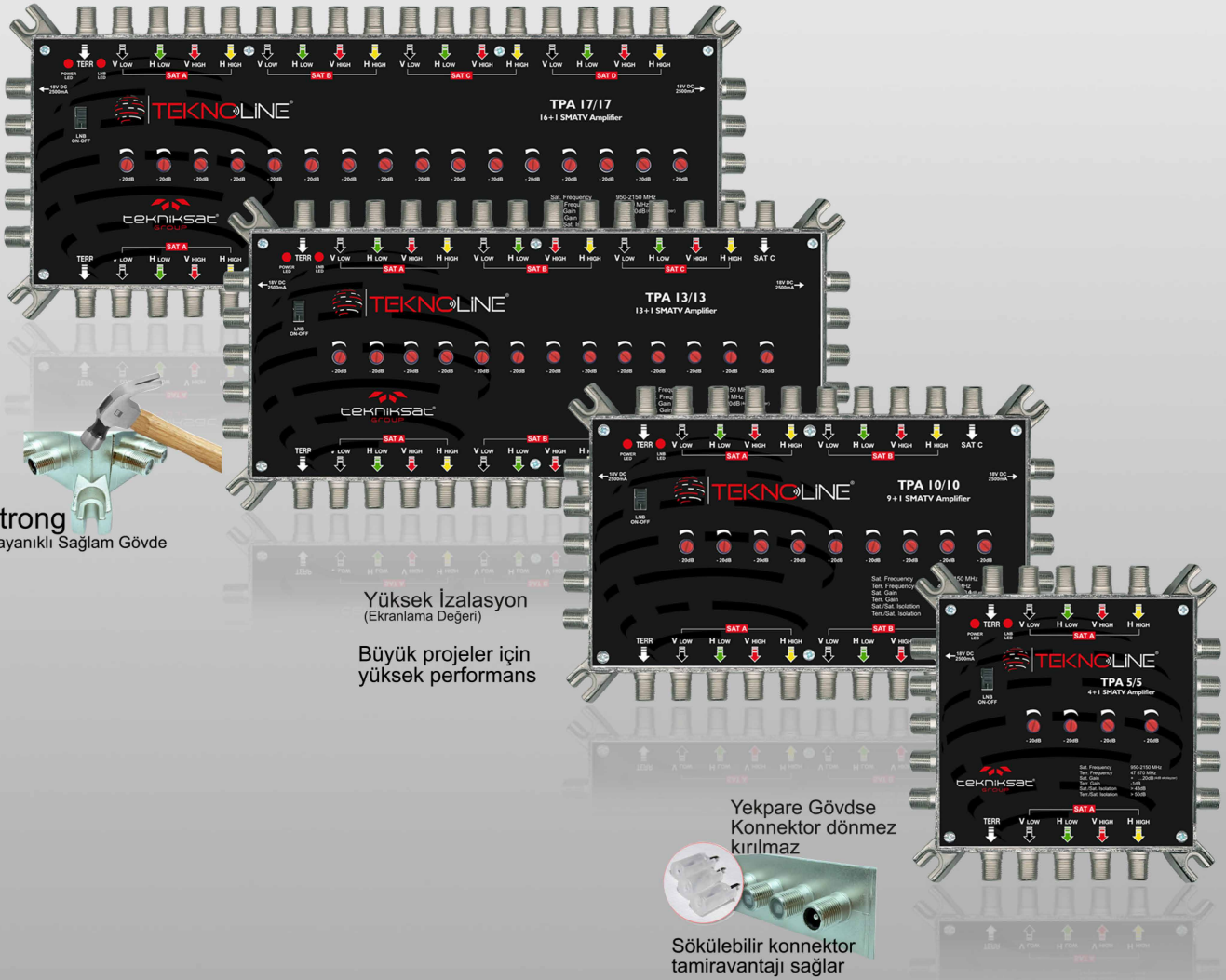
TEKNO LINE®



# ZinKkKasa

profesyonel seri

Professional multiswitch amplifier



strong  
Dayanıklı Sağlam Gövde

Yüksek İzalasyon  
(Ekranlama Değeri)

Büyük projeler için  
yüksek performans

Yekpare Gövde  
Konnektör dönmez  
kırılmaz

Sökülebilir konnektör  
tamir avantajı sağlar

Professional high-quality  
satellite multiswitch amplifier

tekniksatsat  
GROUP

www.tekniksatsatgroup.com.tr  
www.teknoline.net



amplifier series

TPA 5/5 - TPA 9/9 - TPA 10/10 - TPA 13/13 - TPA 17/17

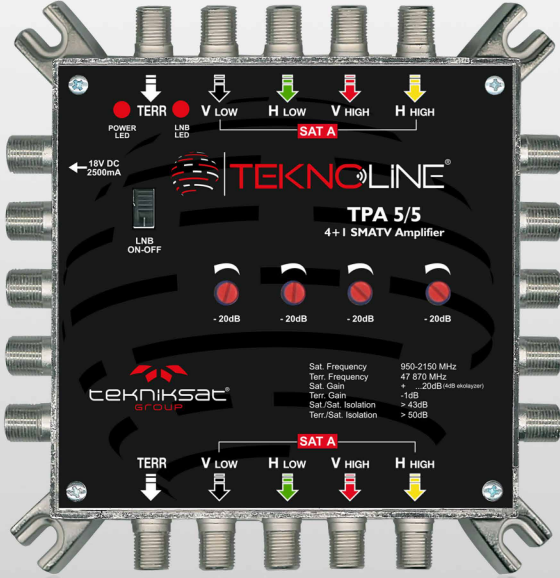


# TEKNO LINE®

Rustproof Aluminum  
Metal Case & Cover  
with long Life **High Isolation**

## Zinc die-cast

Professional multiswitch amplifier



### SMATV AMPLIFIER

Çanak anten ile multiswitch arası kablo mesafesi uzadıkça sinyal kaybı oluşur, bunu engellemek ve stabil tutabilmek için Amplifier kullanılır.

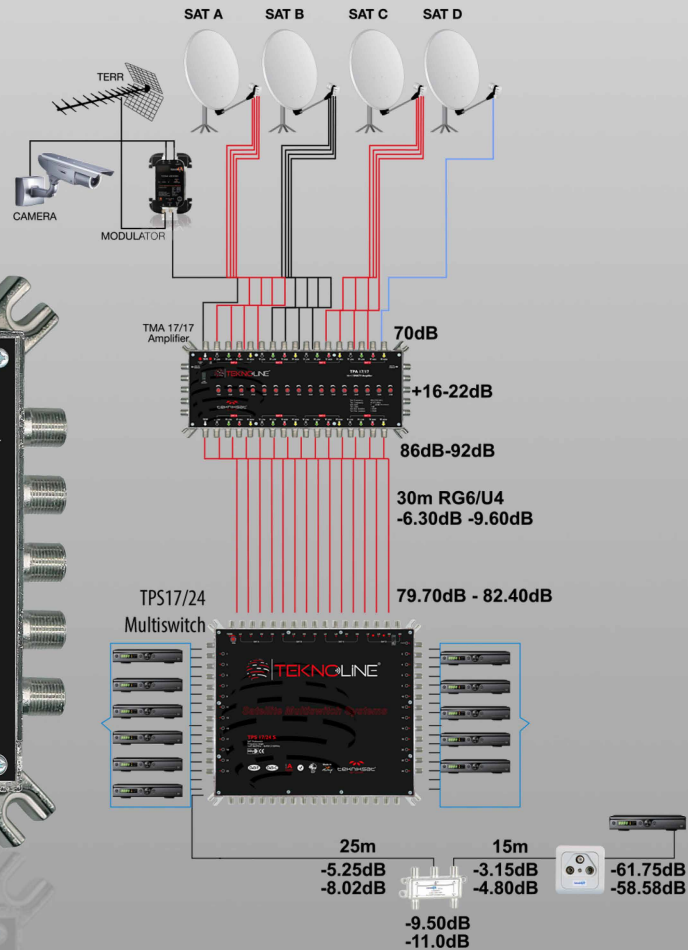
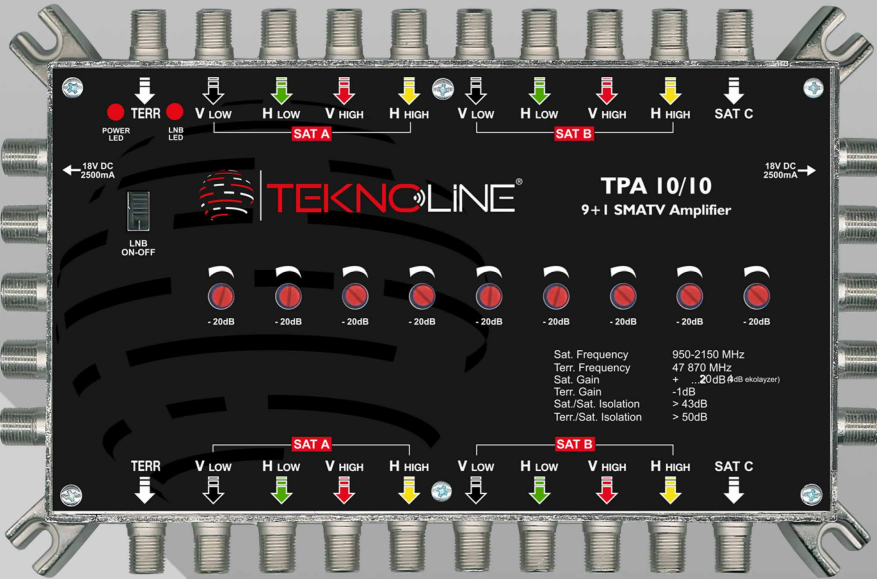
The longer the cable distance between the antenna and the dish multiswitch signal loss occurs, to prevent it and to keep stable Amplifier for use.

### Özellikler

- Kaskat kazanç yükseltici
- Yüksek çıkış seviyesi
- Ayarlanabilir kazanç
- LNB ON OFF Anahtarı
- Kısa devre koruma
- Yüksek izolasyon

### Features

- Cascade gain amplifier
- High output level
- Adjustment gain
- LNB ON OFF Switch
- Short circuit protection
- High isolation

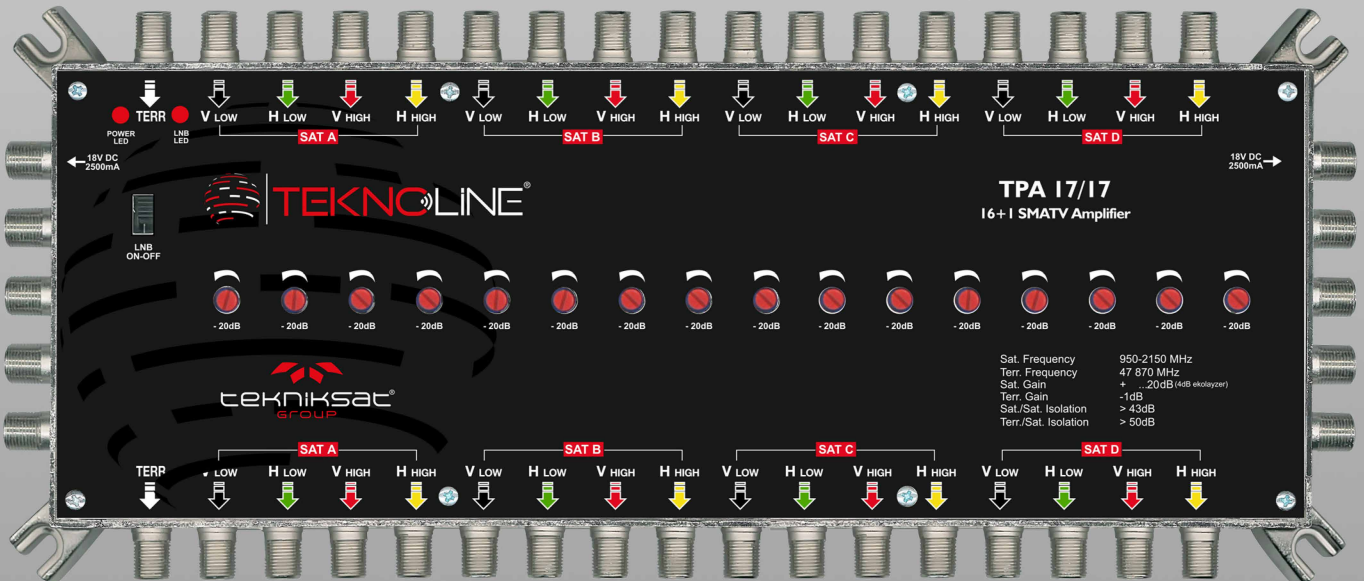
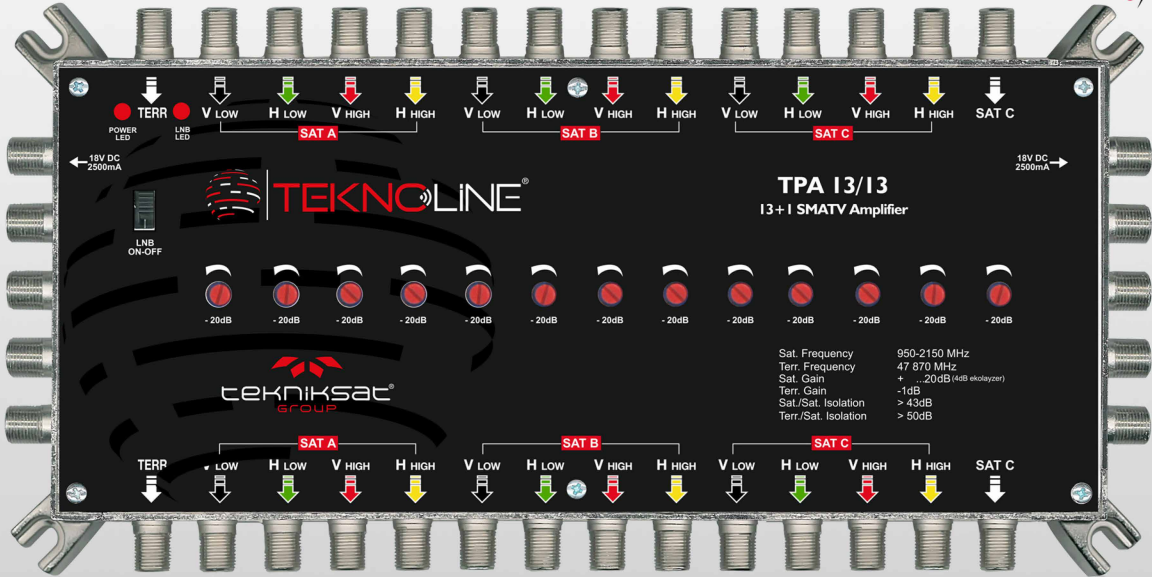


# amplifier series

TPA 5/5 - TPA 9/9 - TPA 10/10 - TPA 13/13 - TPA 17/17



3 YIL GARANTİ



www.tekniksatsatgroup.com.tr  
www.teknoonline.net



**TEKNO LINE**<sup>®</sup>  
Professional high-quality satellite multiswitches

**ZinkKasa** *profesyonel seri*  
Multiswitch

## TPA SERIES

- Cascade gain amplifier
- High output level

- Adjustment gain
- LNB ON OFF Switch

- Short circuit protection
- High isolation

	TPA 5/5	TPA 9/9	TPA 10/10	TPA 13/13	TPA 17/17
Frequency range SAT	950-2150 Mhz				
Frequency range TERR	47-870 Mhz				
Attcnator	20 dB				
Gain TERR	-1dB ±1				
Gain SAT	19...23dB (4dB equalizer)				
Isolation SAT-SAT	>43 dB				
Isolation SAT-TERR	>50 dB				
Max. output power SAT	110 dBμV				
Input SAT - TERR	4+1	8+1	9+1	12+1	16+1
Output SAT - TERR	5	9	10	13	17
Operating voltage	16V 1A	16V 1,5A	16V 1,5A	16V 2A	16V 2A
Total current draw	150 mA	280 mA	310 mA	400 mA	500 mA
Total current draw with LNB	310 mA	600 mA	760 mA	880 mA	1200 mA
Temperature	-20 + 50 °C	-20 + 50 °C	-20 + 50 °C	-20 + 50 °C	-20 + 50 °C
Dimensions	175x120x42 mm	246x120x42 mm	246x120x42 mm	310x120x42 mm	410x120x42 mm
Weight	430gr	670gr	680gr	840gr	1100gr

